

FLOOR PLANS

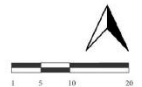


LOWER GROUND FLOOR PLAN

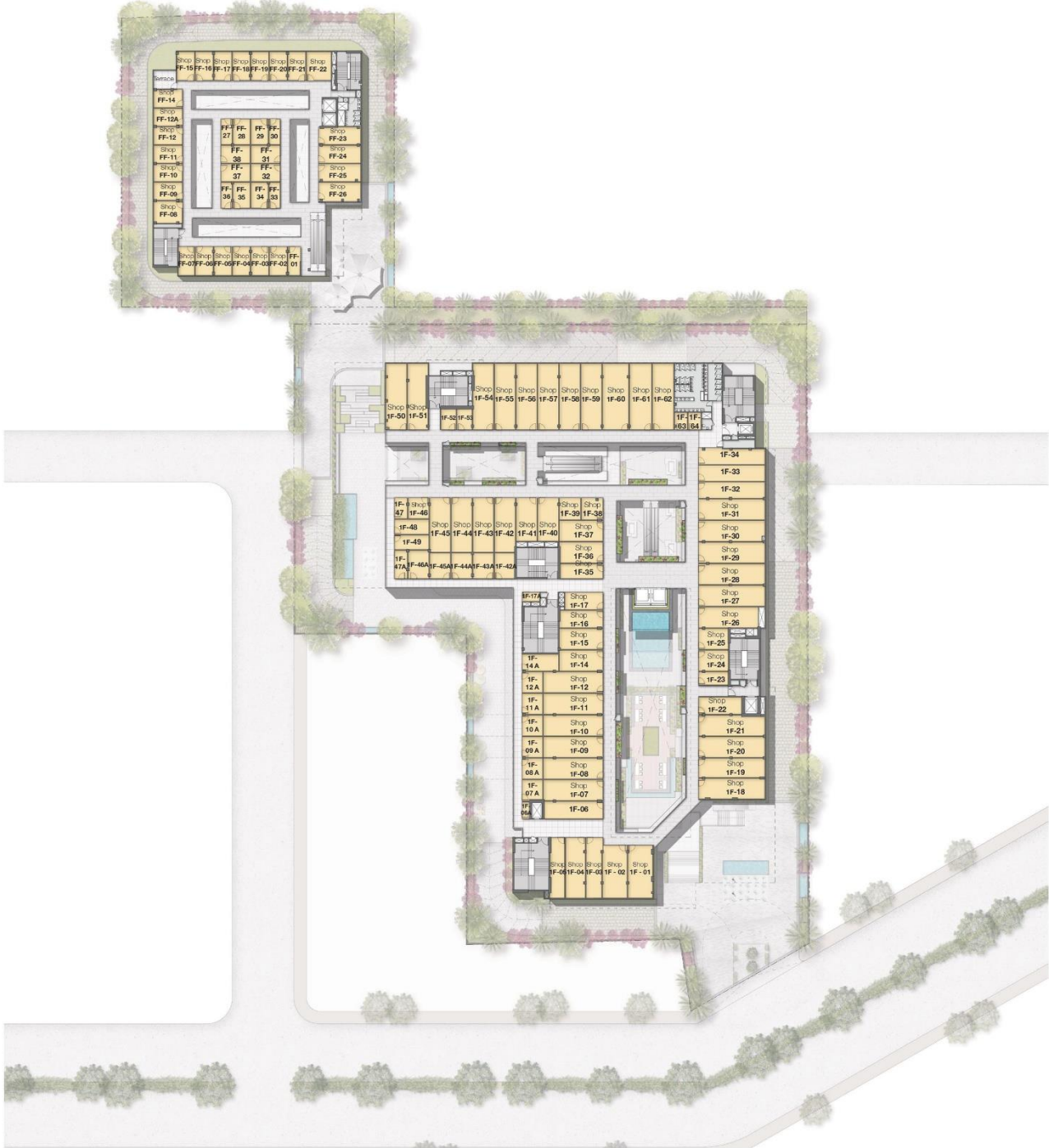
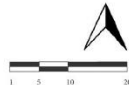


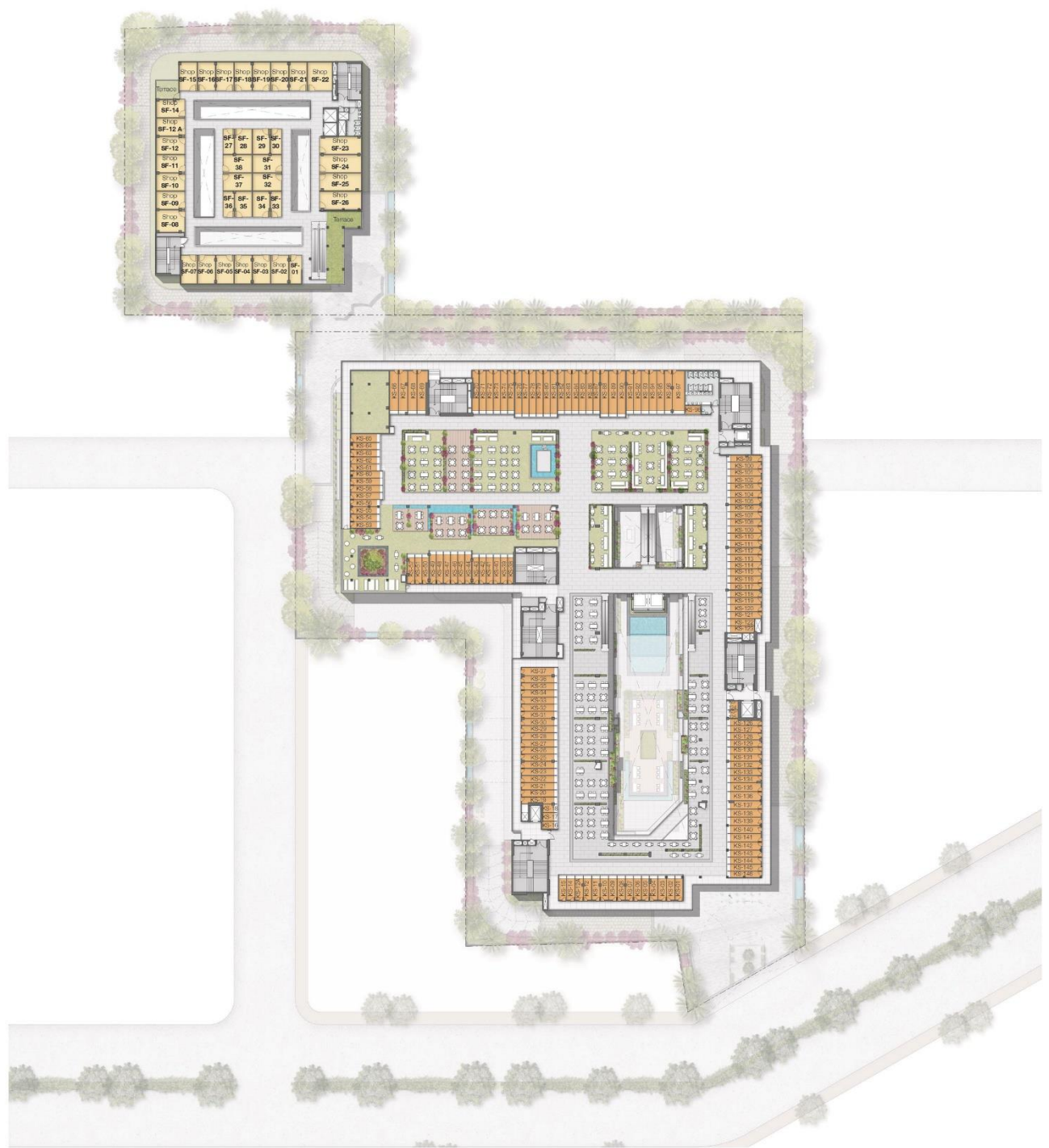


GROUND FLOOR PLAN

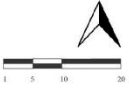


FIRST FLOOR PLAN

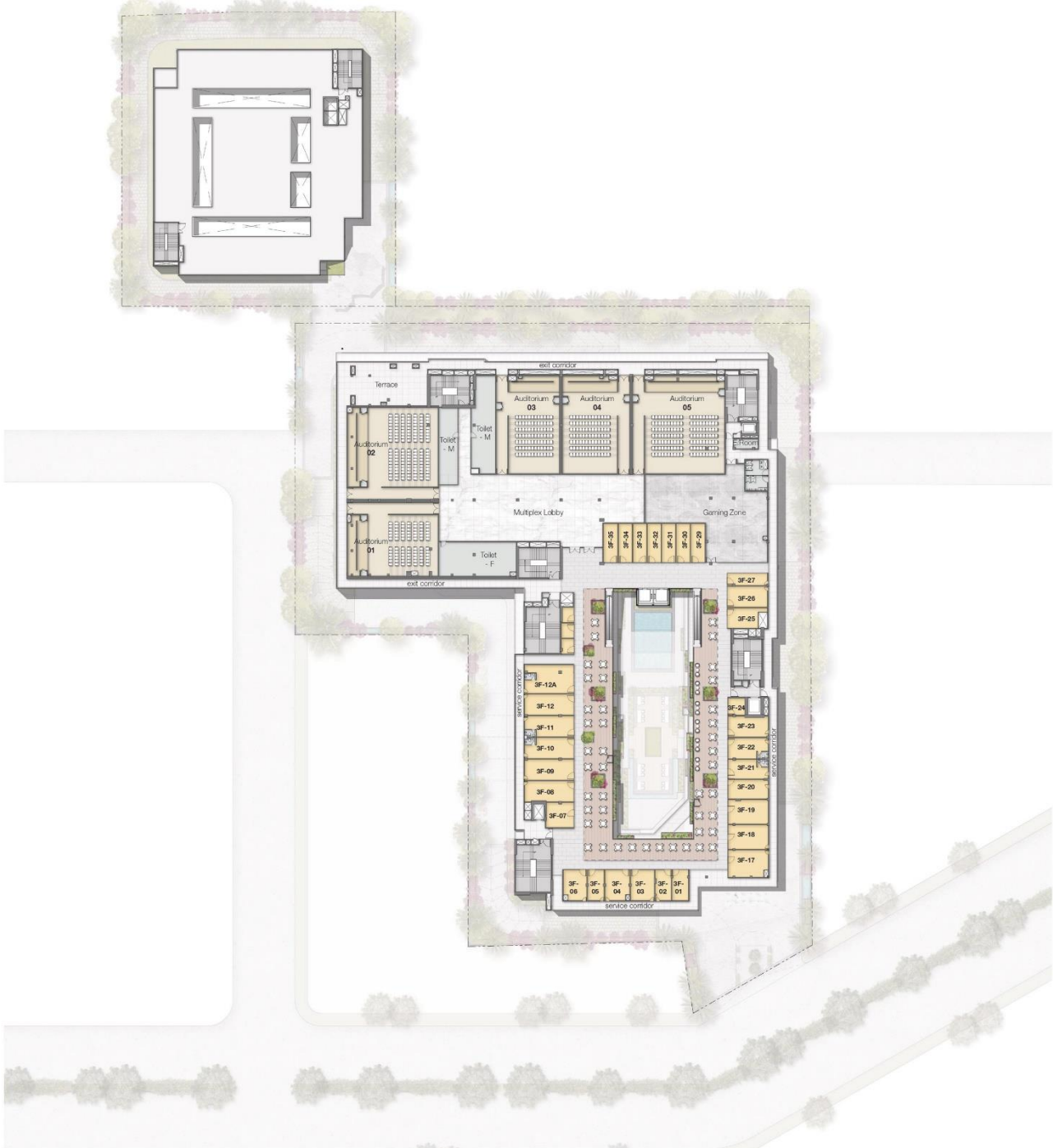


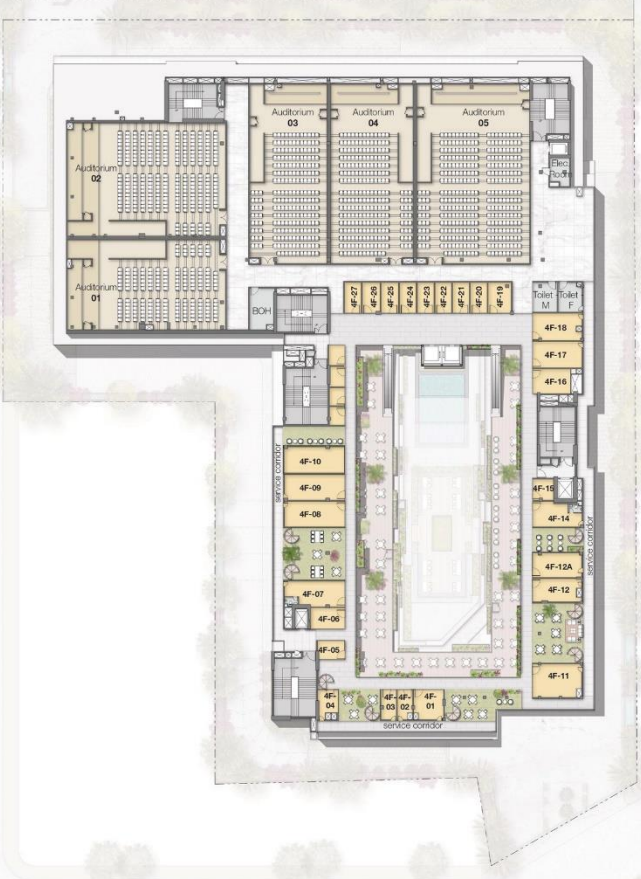
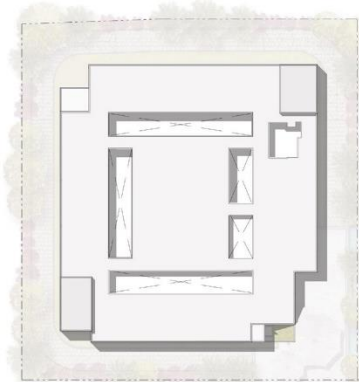


SECOND FLOOR PLAN

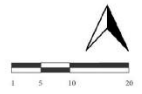


THIRD FLOOR PLAN

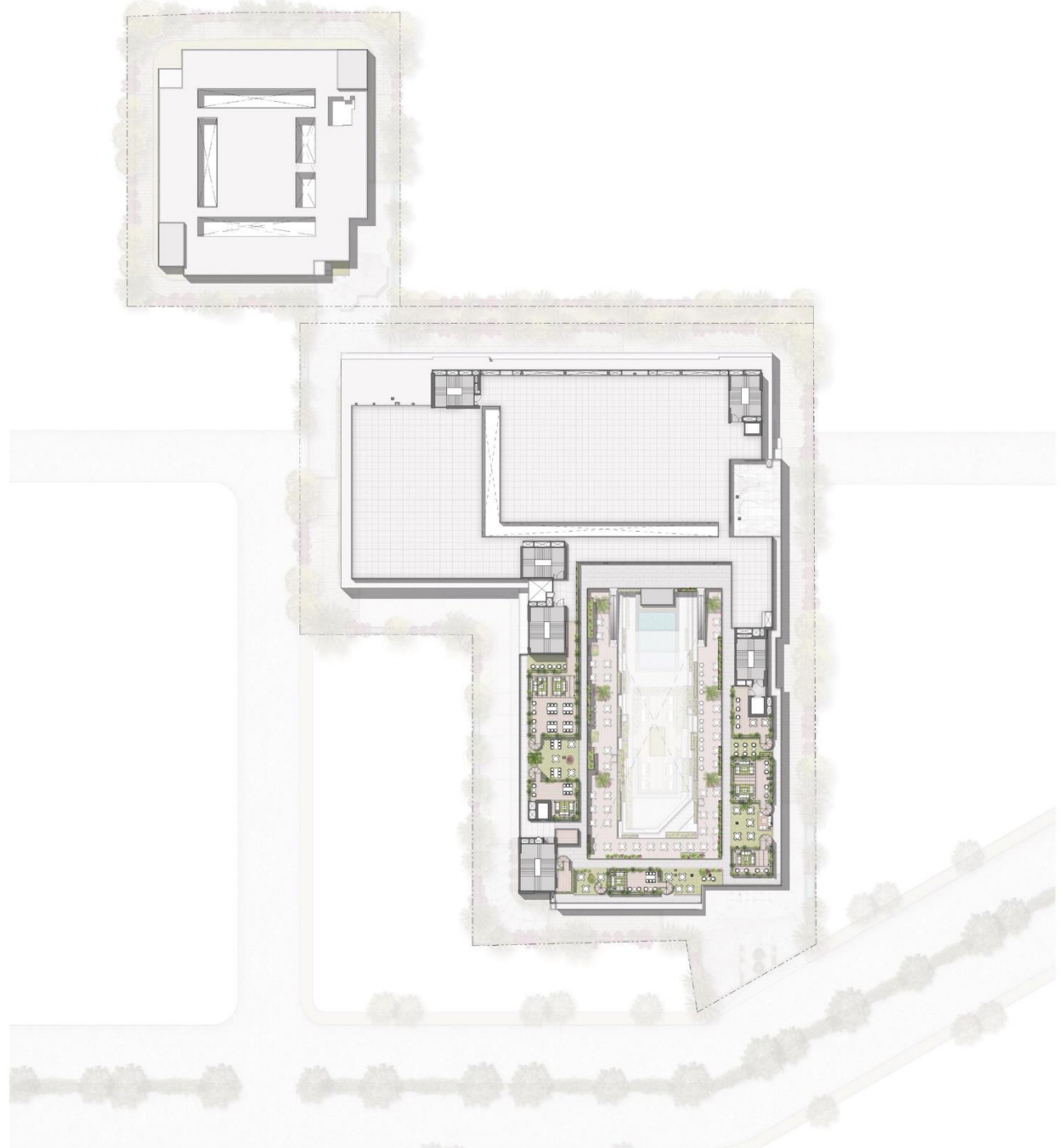
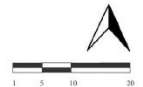




FOURTH FLOOR PLAN



TERRACE PLAN



REVISED
RATES

LG Floor 52,750 *Psf*

Ground Floor 52,750 *Psf*

First Floor 34,750 *Psf*

Food Court 29,750 *Psf*

Restaurant
3rd Floor 30,750 *Psf*

Restaurant
4th Floor 27,750 *Psf*

wef from (31st March 2021)

PAYMENT PLAN OPTED

CONSTRUCTION LINKED PAYMENT PLAN (CLP)	
On Application of Booking	9% of BSP
Within 45 Days of Booking	11% of BSP
On Start of Excavation	10% of BSP
On Casting of Foundations	10% of BSP
On Casting of Upper Basement Floor Slab	10% of BSP
On Casting of Ground Floor Slab	10% of BSP(Plus 50% of PLC)
On Casting of 2nd Floor Slab	10% of BSP(Plus 50% of PLC)
On Casting of Top Floor Slab	10% of BSP
On Completion of Brickwork for the unit	7.5% of BSP
On Commencement of Façade work	7.5% of BSP
On Offer of Possession*	5%(Plus EDC, IDC, IFMS, Right to use Car Parking)

*Charges for exclusive right to use car parking, Stamp duty, Registration charges, Administrative charges, Legal charges, other charges as applicable will be charged extra. *GST and other taxes shall be payable extra as applicable. Terms & Condition are subject to change.

POSSESSION LINKED PAYMENT PLAN (PLP)	
On Application of Booking	9% of BSP
Within 45 Days of Booking	16% of BSP (Plus 25% of PLC)
On offer of Possession*	75% of BSP (Plus 75% of PLC) (Plus EDC, IDC, IFMS, Right to use Car Parking)

*Charges for exclusive right to use car parking, Stamp duty, Registration charges, Administrative charges, Legal charges, other charges as applicable will be charged extra. *GST and other taxes shall be payable extra as applicable. Terms & Condition are subject to change.

SPECIAL PAYMENT PLAN (SPP) - OPTION 1	/ DOWN PAYMENT PLAN (DP) - OPTION 1
On Application of Booking	9% of BSP
Within 45 Days of Booking	26% of BSP (Plus 35% of PLC)
On Completion of super structure/terrace slab	35% of BSP (Plus 35% of PLC)
On Offer of Possession*	30% of BSP (Plus 30% of PLC) (Plus EDC, IDC, IFMS, Right to use Car Parking)

*Charges for exclusive right to use car parking, Stamp duty, Registration charges, Administrative charges, Legal charges, other charges as applicable will be charged extra. *GST and other taxes shall be payable extra as applicable. Terms & Condition are subject to change.

SPECIAL PAYMENT PLAN (SPP) - OPTION 2	/ DOWN PAYMENT PLAN (DP) - OPTION 2
On Application of Booking	9% of BSP
Within 45 Days of Booking	41% of BSP (Plus 50% PLC)
On Offer of Possession*	50% of BSP (Plus 50% PLC) (Plus EDC, IDC, IFMS, Right to use Car Parking)

*Charges for exclusive right to use car parking, Stamp duty, Registration charges, Administrative charges, Legal charges, other charges as applicable will be charged extra. *GST and other taxes shall be payable extra as applicable. Terms & Condition are subject to change.

SPECIAL PAYMENT PLAN (SPP) - OPTION 3	/ DOWN PAYMENT PLAN (DP) - OPTION 3
On Application of Booking	9% of BSP
Within 45 Days of Booking	86% of BSP (Plus 95% PLC)
On Offer of Possession*	05% of BSP (Plus 5% PLC) (Plus EDC, IDC, IFMS, Right to use Car Parking)

*Charges for exclusive right to use car parking, Stamp duty, Registration charges, Administrative charges, Legal charges, other charges as applicable will be charged extra. *GST and other taxes shall be payable extra as applicable. Terms & Condition are subject to change.

*The offer of possession of the above said Commercial Unit shall be given by the company on applying of occupancy certificate to the competent authority. The offer of possession is not dependent upon grant of occupation certificate and/or completion certificate.





Thank you!

